

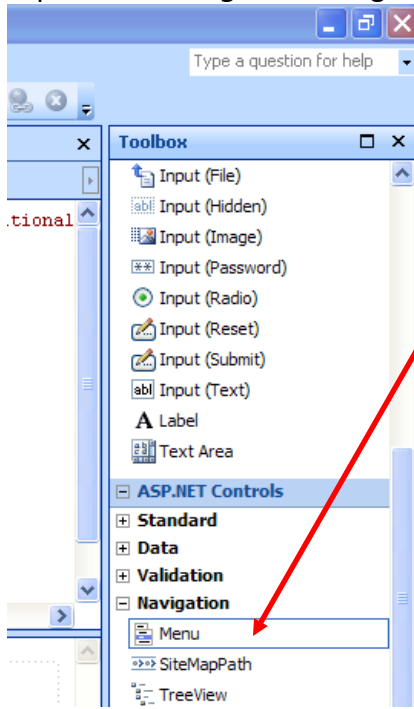
Expression Web – Vertical Navigation Menu

This tutorial will walk you through creating a vertical navigation menu that is a built-in feature of MS Expression Web

NOTE: Before you insert the navigation menu, you'll want to modify the properties of the cell or layer that you are putting the menu into. If it is a cell, you'll want to make the vertical alignment at the top. In either case, you'll want to set the background color of that cell or layer so that your menu will take on that color.

Starting Out

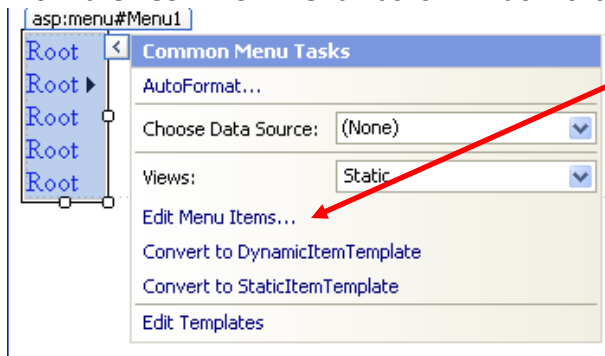
- In the Toolbox taskpane, scroll down to **ASP.NET Controls** and expand it
- Expand the **Navigation** category and locate **Menu**



- Drag a Menu onto the desired location of your page (this should be on your Master template)

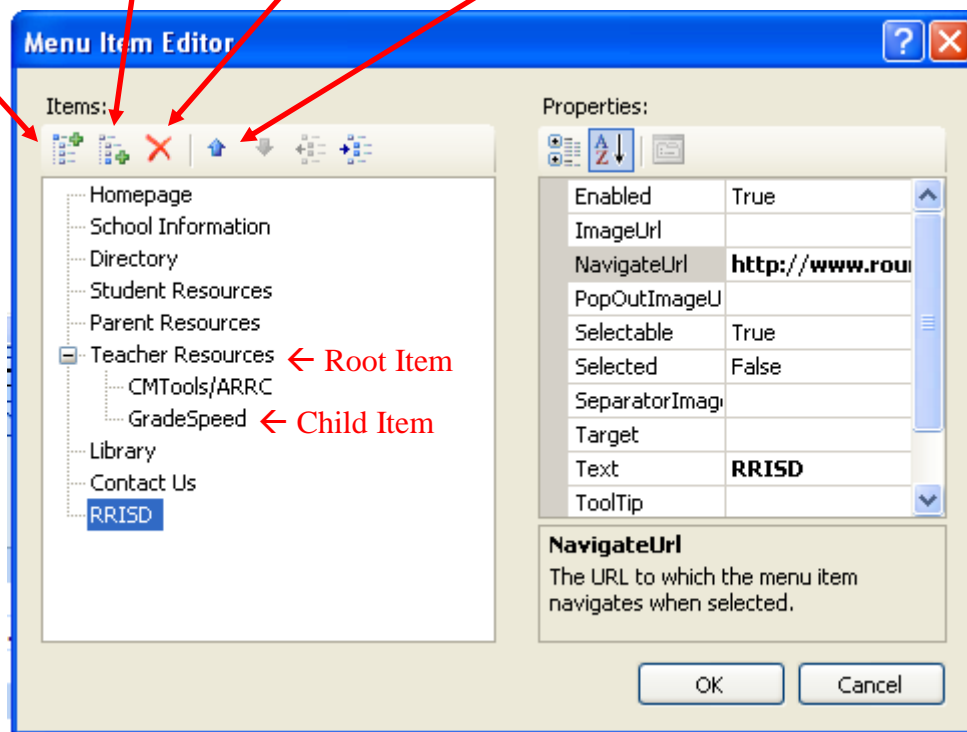
Entering the editing mode of the Menu

- If you do not see the “Common Menu Tasks” window, click on the “>” button to reveal it
- From the “Common Menu Tasks” window click on **Edit Menu Items...**



Menu Item Editor

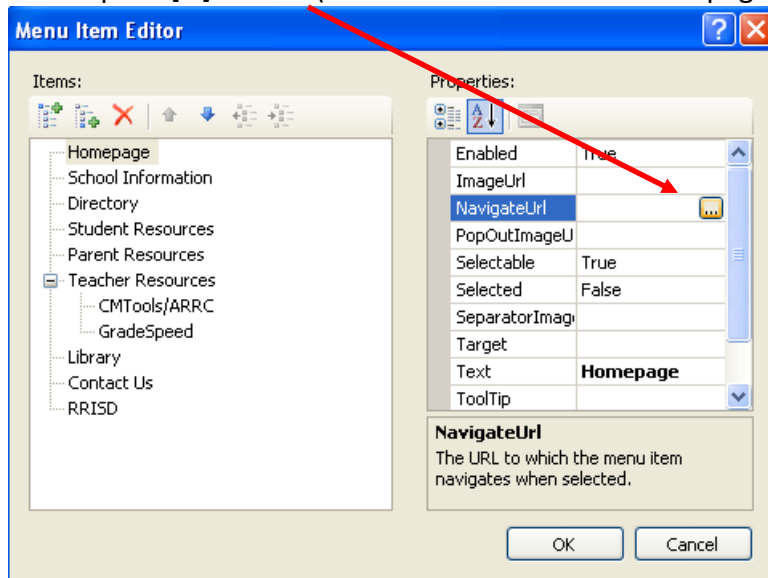
Add a Root Item | Add a Child Item | Delete Item | Move Item Up or Down in List



***Each "Item" only needs 2 of the properties fields to be filled out:

1. **Text**: Enter the exact label you want to show up on the menu in this field
2. **NavigateUrl**: Enter either:
 - a. The URL to the external site you want to link to (copy and paste from your web browser) (see RRISD example above)

- b. The page within the site you want to link to by clicking in the NavigateUrl field and then clicking on “ellipsis” [...] button (then browse and click on the page to be linked to)



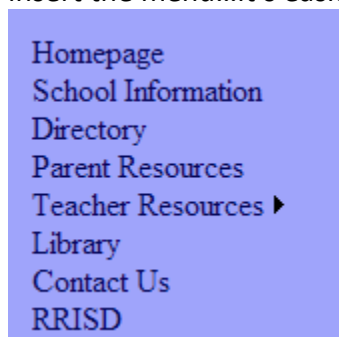
To prevent errors, do not **type** anything into the “NavigateUrl” field

Click **OK** when you are finished.

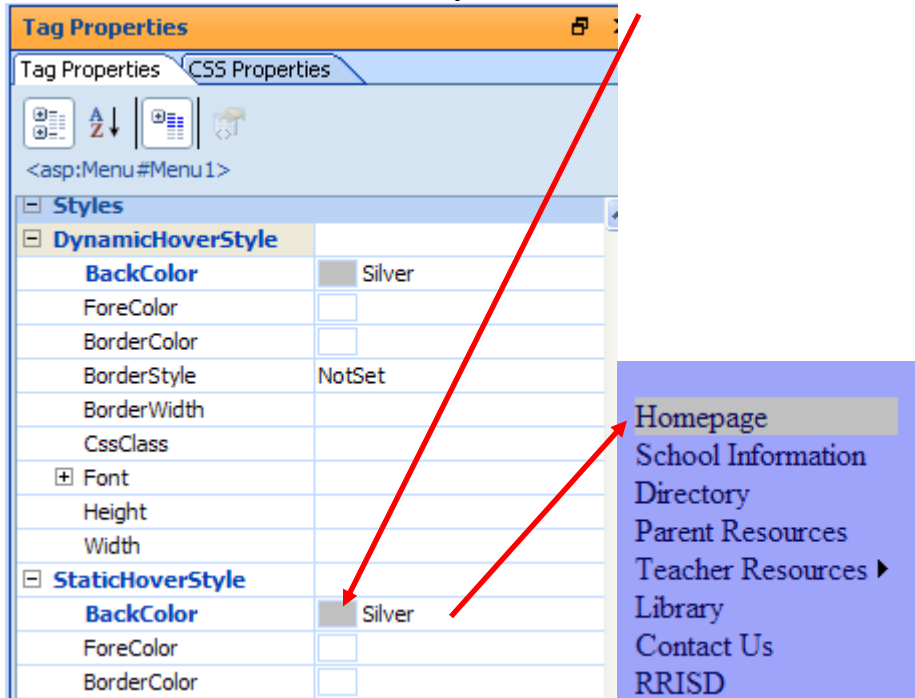
Customizing the Vertical Navigation Menu

NOTE: The items on your navigation menu are going to be hyperlinks and therefore will be whatever color you setup for hyperlinks in the Page Properties section of your site. Keep this in mind when selecting colors for your hyperlinks and for you navigation menu. You can setup different hyperlink colors for the document and for the menu by adding a custom style to them (see handout on creating a CSS Style Sheet).

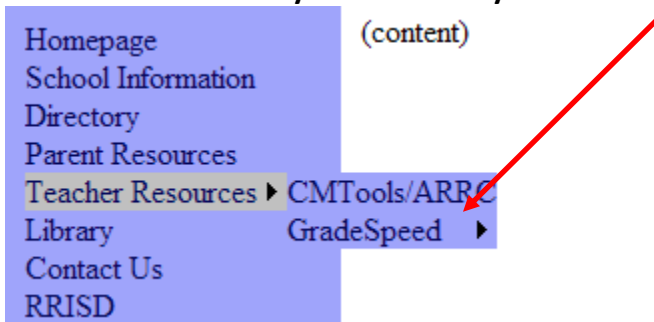
- Click on the vertical navigation menu to select/highlight it
- Locate the “Tag Properties” task pane and click on the “Tag Properties” tab
- Setting the background color for your Root or “**Static**” menu items
 - Set the background color of the cell or layer that your menu is in (you should do this before you insert the menu...it’s easier :)



- Setting the **Hover** color for your Root or “Static” menu items
 - Select a color under **StaticHoverStyle** → **BackColor**



- Setting the background color for your Child or “Dynamic” menu items
 - Select a color under **DynamicMenuStyle** → **BackColor**



- Setting the **hover** color for your Child or “Dynamic” menu items
 - Select a color under **DynamicHoverStyle** → **BackColor**

